


The GE Adventure Series™



WELCOME!



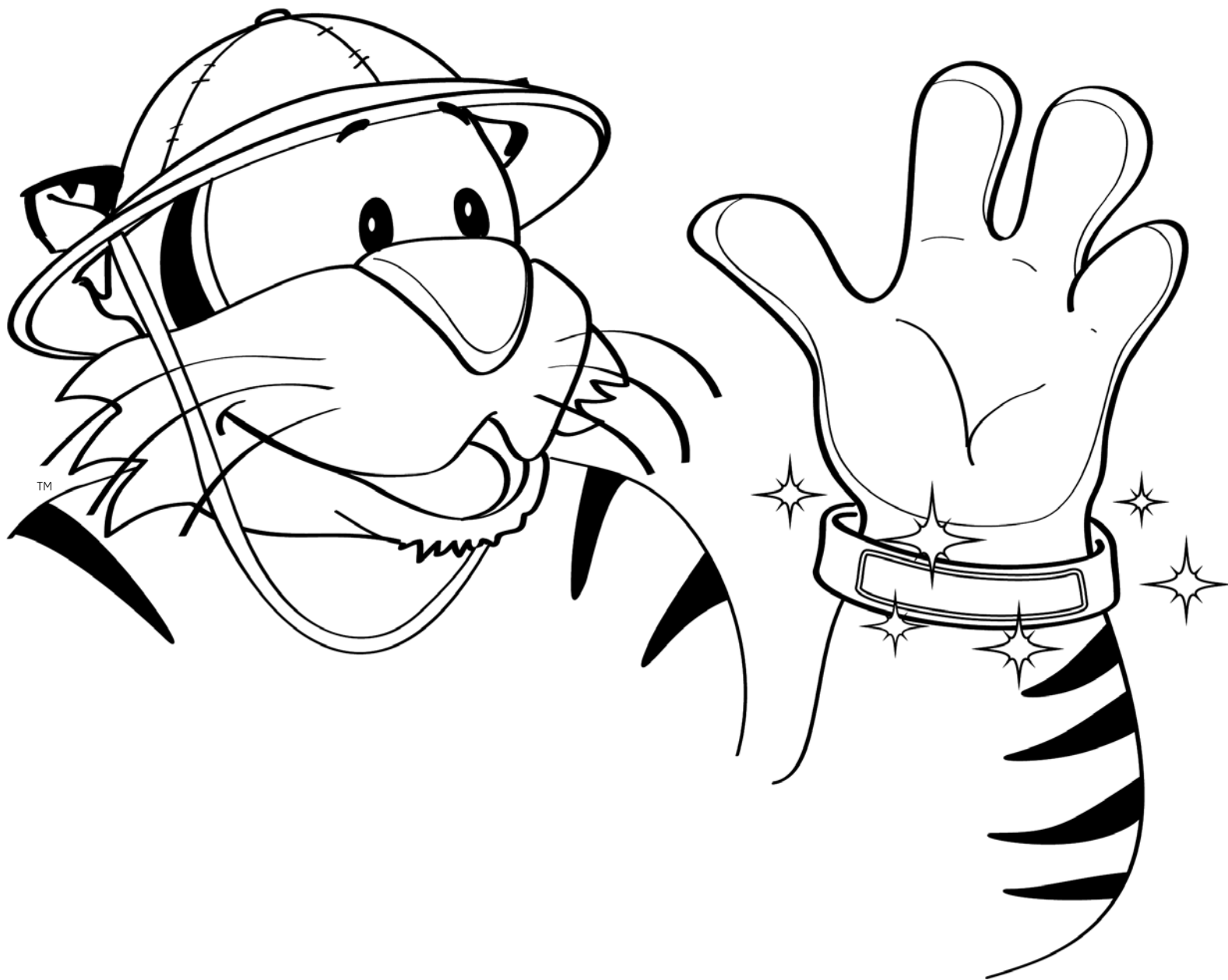
HELLO, WELCOME TO
RADIOLOGY!
DO YOU KNOW WHY
YOU ARE HERE TODAY?

HI! I AM HERE
TO GET A
PET/CT SCAN!

Tips for the adult

In simple terms, tell the child why he is at the hospital. Use staff as a resource to help explain the process to the child.

**YOU WILL GET A SPECIAL BRACELET TO WEAR.
THIS WILL BE YOUR TICKET TO GO TO COZY CAMP!**



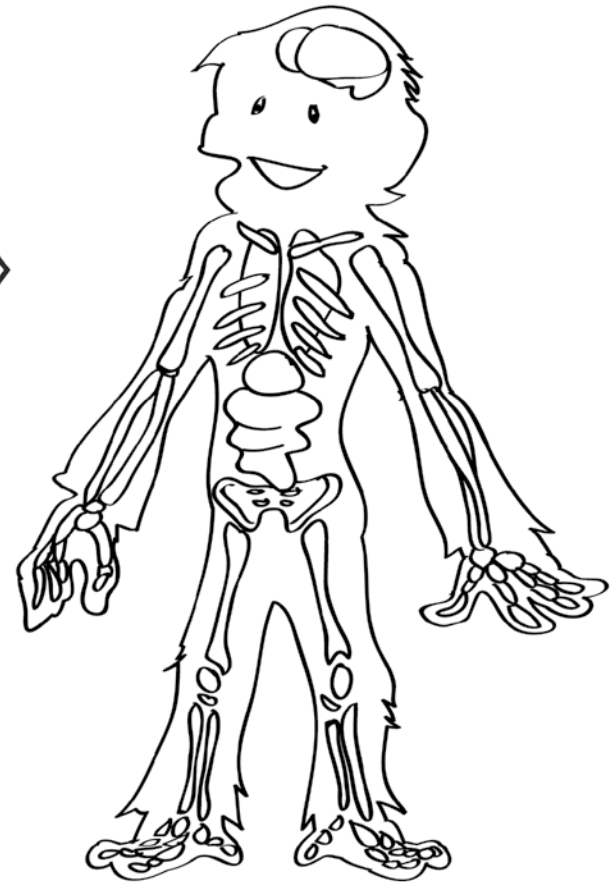
Tips for the adult

The bracelet provides proper identification of the child and promotes safety.

WHAT IS A PET/CT SCAN ANYWAY?



REGULAR PICTURE



PET/CT SCAN PICTURE

**A PET/CT SCAN IS A VERY SPECIAL PICTURE
OF YOUR MUSCLES AND ORGANS INSIDE OF
YOUR BODY.**

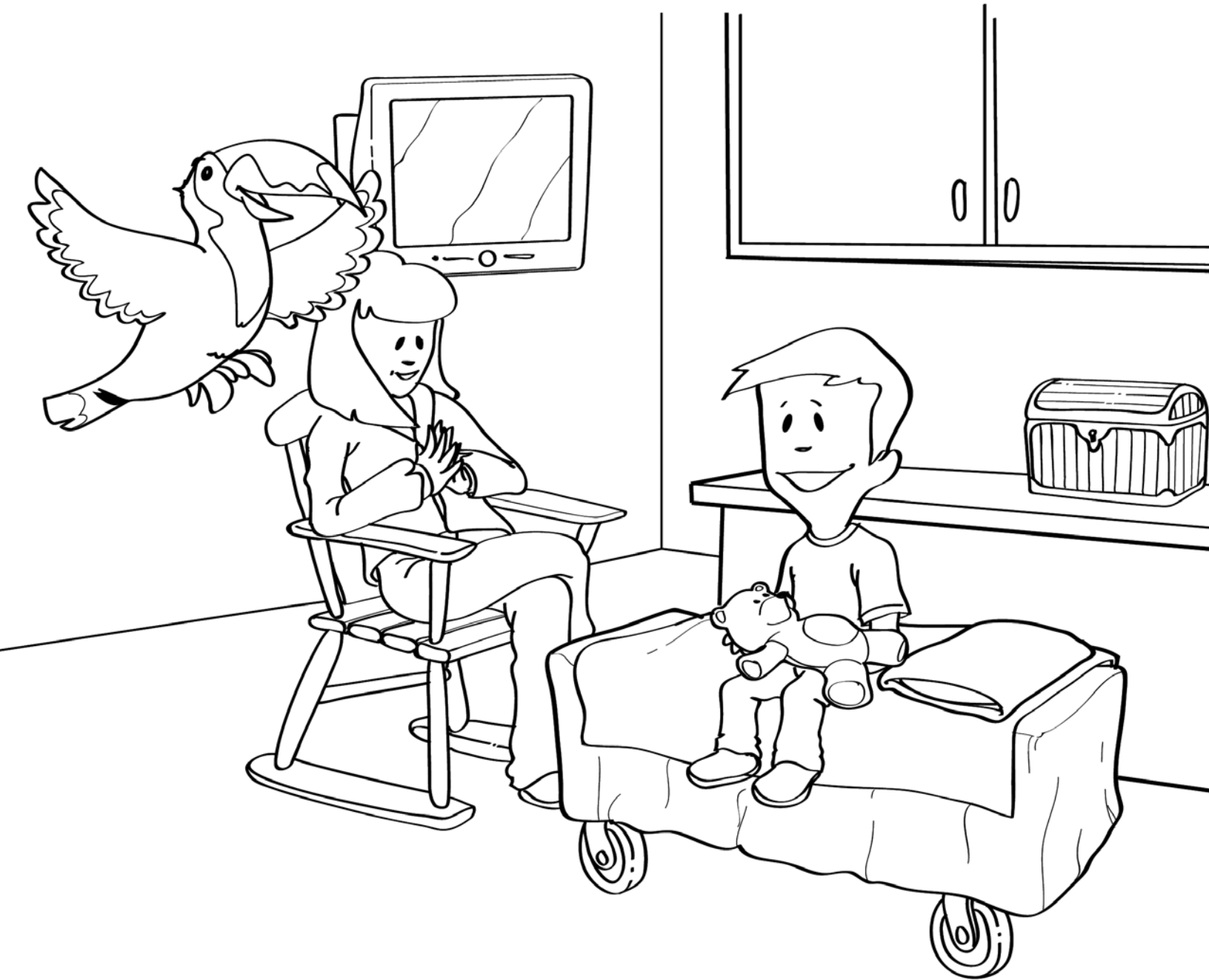
**DID YOU KNOW THAT A PET/CT SCAN HELPS
DOCTORS SEE YOUR MUSCLES AND ORGANS?**

Tips for the adult

Talk about muscles and organs with the child.

WHEN THE NURSE TAKES YOU TO THE NEXT ROOM, YOU CAN SIT ON THE BED, WATCH TV OR EXPLORE THE TREASURE CHEST.

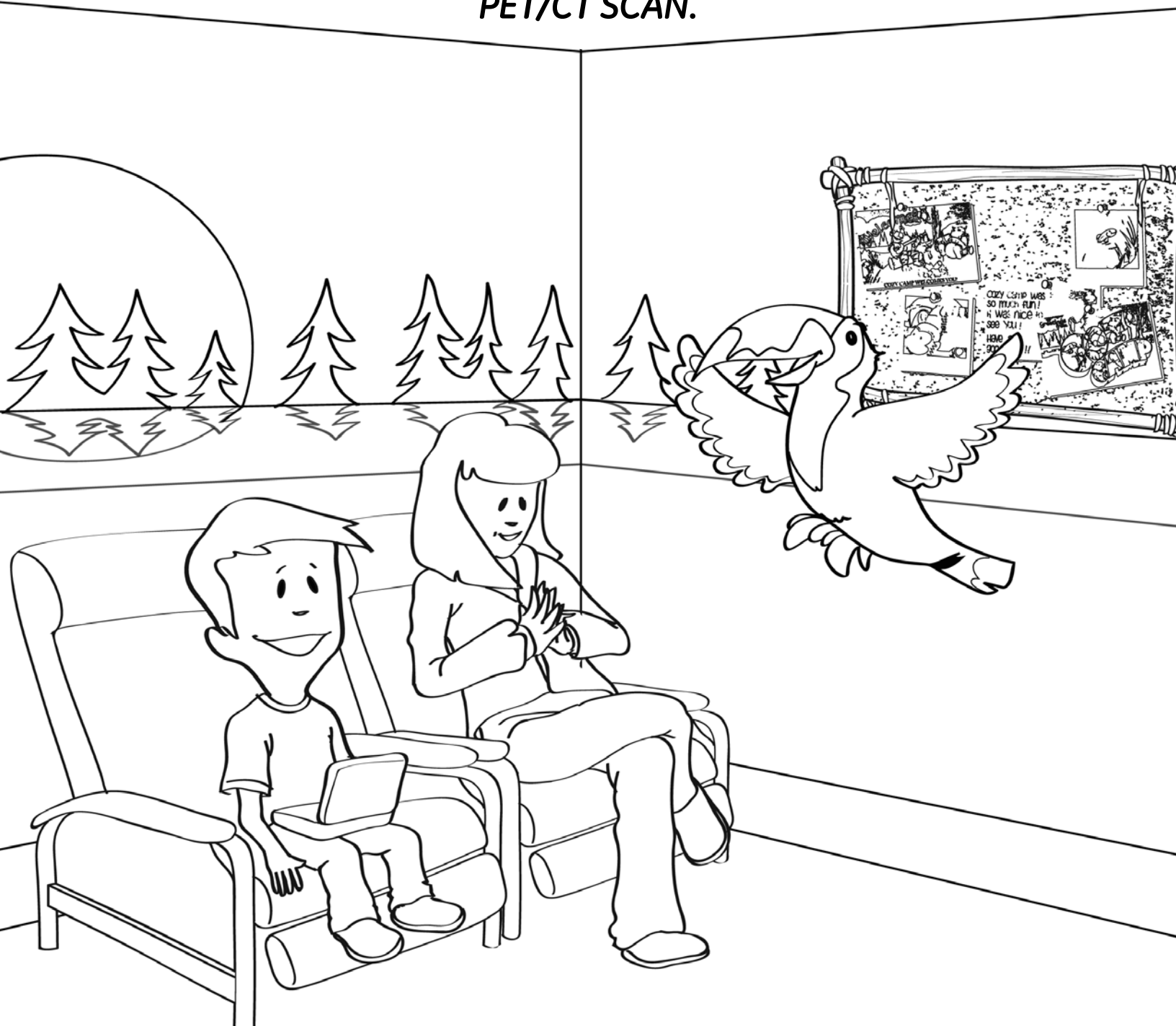
THE ADULTS WILL TALK.



Tips for the adult

Comfort items, such as blankets or stuffed animals, may accompany the child during the test. Check items with staff.

**WHEN THE TECHNOLOGIST TAKES YOU
TO THE NEXT ROOM, YOU CAN RELAX
OR READ THIS COLORING BOOK
WHILE YOU WAIT FOR YOUR
PET/CT SCAN.**



Tips for the adult

The patient may be in this room for about an hour before their PET/CT scan.

**THIS IS HOW YOU WILL LOOK WHEN
YOU LAY ON THE TABLE.**



Tips for the adult

Assure the child that the staff is here to help with the PET/CT scan.

BEFORE THE PET/CT MACHINE CAN TAKE YOUR PICTURE, YOU WILL HAVE TO PUT ON A SPECIAL CAMPING SEATBELT SO YOU ARE SAFE!



YOU WILL HAVE TWO JOBS:

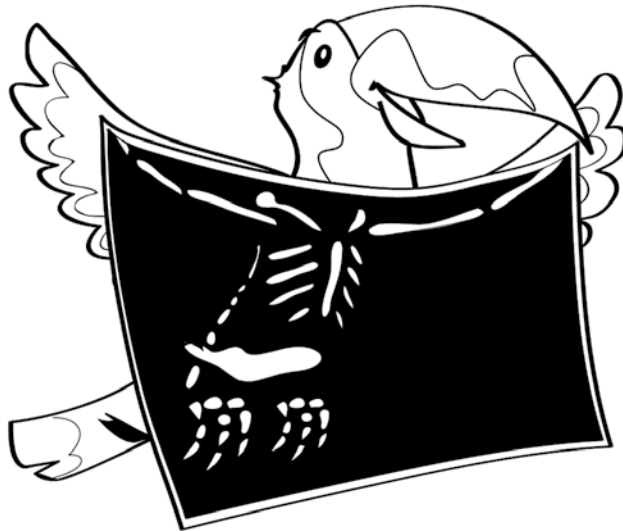
- 1. FASTEN YOUR SEAT BELT**
- 2. HOLD VERY STILL**

**SOME KIDS SAY THEY LIKE TO PRETEND THAT THEY ARE STATUES OR RAG DOLLS
WHAT DO YOU WANT TO PRETEND TO BE?**

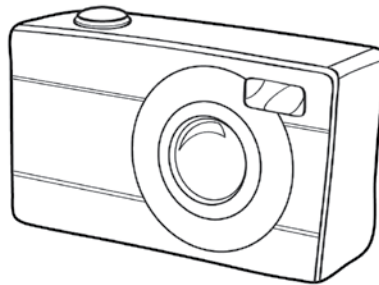
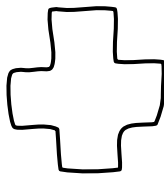
Tips for the adult

*What helps your child relax?
(Singing a favorite song? Taking slow deep breaths?
Holding a stuffed animal?)*

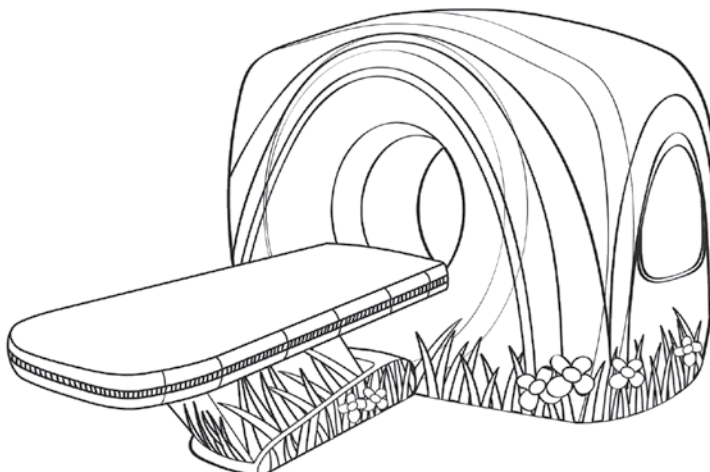
**YOU CAN RELAX AND ENJOY COZY CAMP WHILE
THE CAMERA IS TAKING YOUR PICTURES.**



X-RAY



CAMERA



PET/CT

Tips for the adult

The PET/CT scan may take about 20-30 minutes.

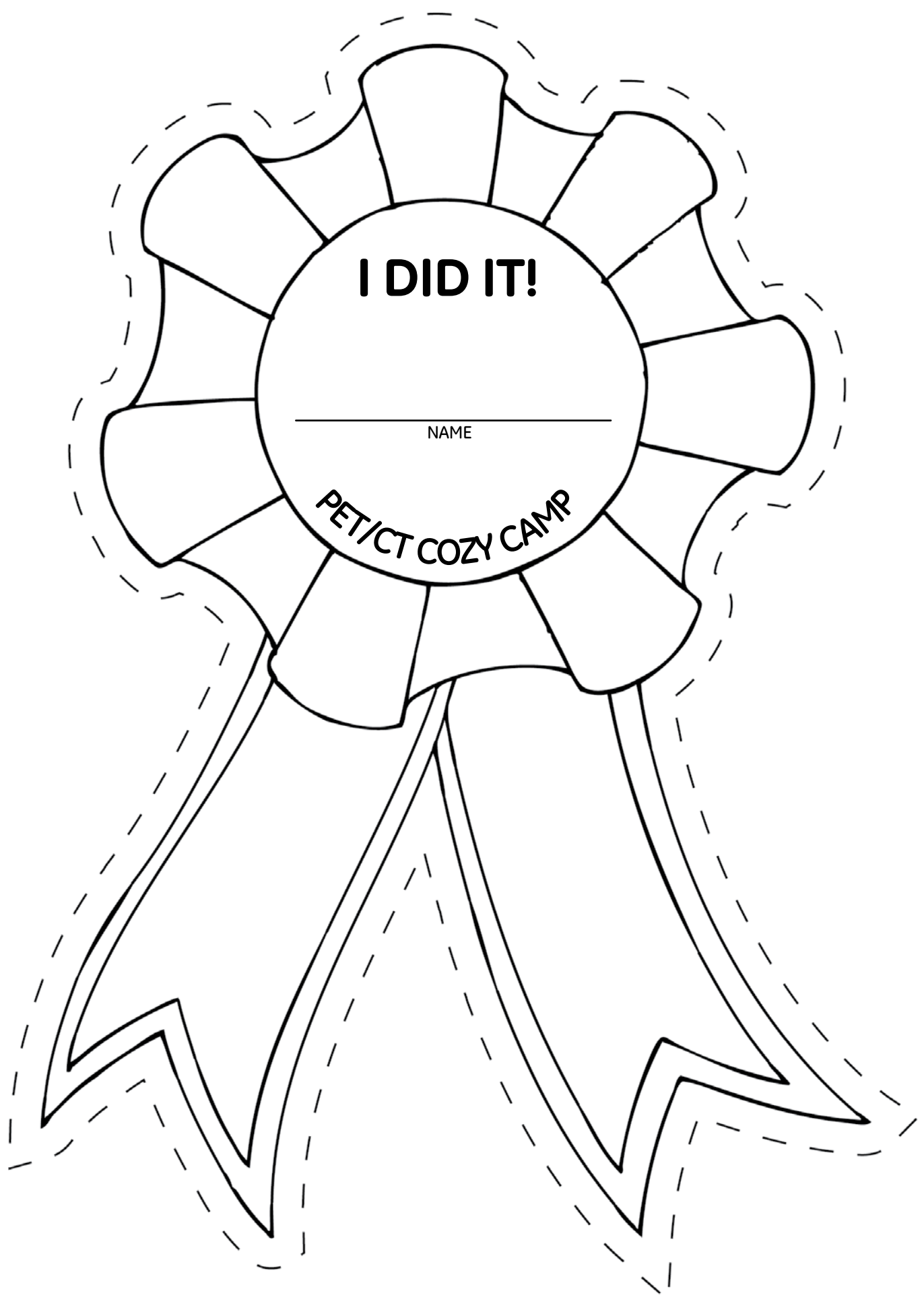
**REMEMBER YOUR JOB...TO LAY VERY STILL!
ONCE THE PET/CT CAMERA TAKES ALL OF YOUR
PICTURES, THE STAFF WILL LET YOU KNOW THAT
YOU ARE ALL DONE!**



**YOUR COZY CAMP ADVENTURE IS OVER!
YOU DID A GREAT JOB!**

Tips for the adult

Please check with staff regarding staying in the room during the PET/CT scan. Ask the child if it would be helpful to stay connected through touch.



I DID IT!

NAME

PET/CT COZY CAMP

©2010 General Electric Company – All rights reserved.
GE and GE Monogram are trademarks of
General Electric Company. GE Healthcare,
a division of General Electric Company.

General Electric Company reserves the right to make
changes in specification and features shown herein, or
discontinue the product described at any time without
notice or obligation. Contact your GE representative for
the most current information.

GE Adventure Series and GE Adventure Series Characters
within this publication are trademarks of GE Healthcare.

About GE Healthcare:

GE Healthcare provides transformational medical technologies and services that are shaping a new age of patient care. Our broad expertise in medical imaging and information technologies, medical diagnostics, patient monitoring systems, drug discovery, biopharmaceutical manufacturing technologies, performance improvement and performance solutions services help our customers to deliver better care to more people around the world at a lower cost. In addition, we partner with healthcare leaders, striving to leverage the global policy change necessary to implement a successful shift to sustainable healthcare systems.

Our “healthymagination” vision for the future invites the world to join us on our journey as we continuously develop innovations focused on reducing costs, increasing access and improving quality around the world. Headquartered in the United Kingdom, GE Healthcare is a unit of General Electric Company (NYSE: GE). Worldwide, GE Healthcare employees are committed to serving healthcare professionals and their patients in more than 100 countries. For more information about GE Healthcare, visit our website at www.gehealthcare.com

GE Healthcare
3000 North Grandview Blvd
Waukesha, WI 53188
U.S.A.
www.gehealthcare.com



imagination at work